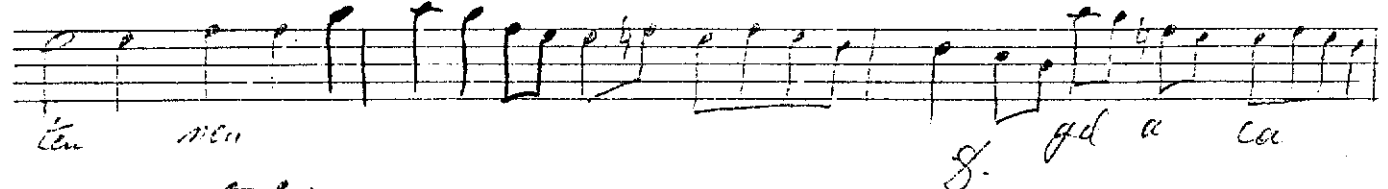
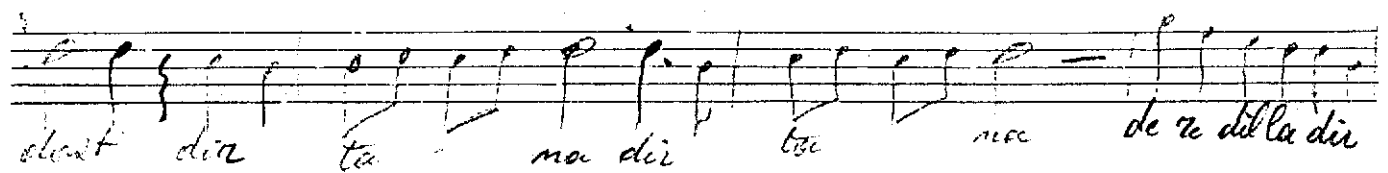
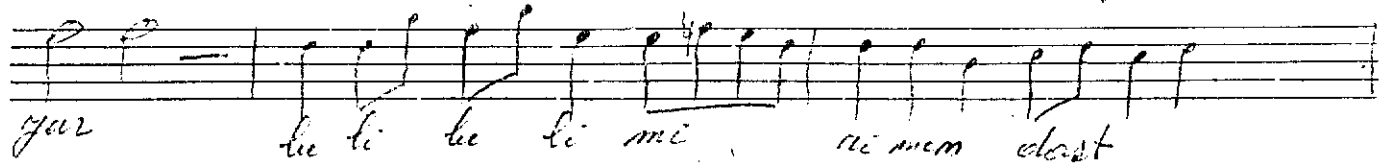
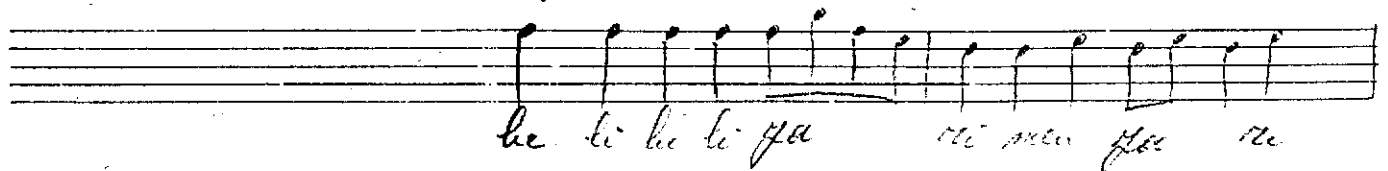
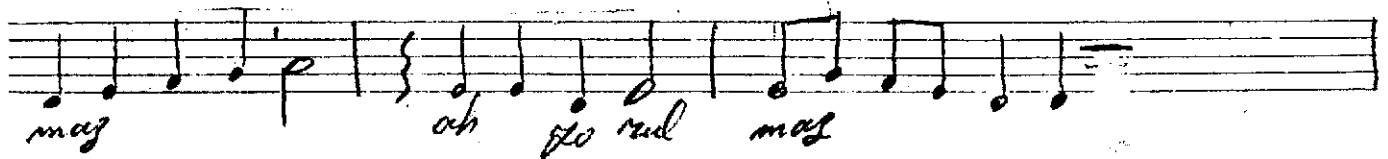
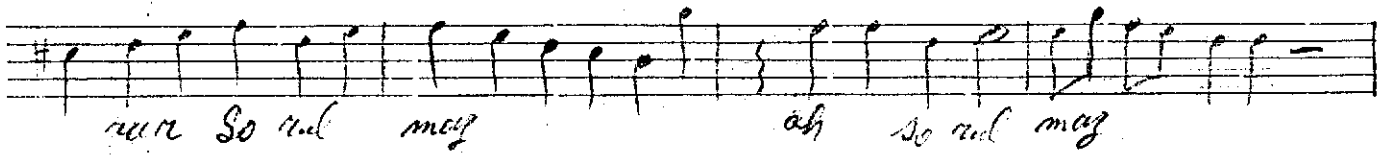
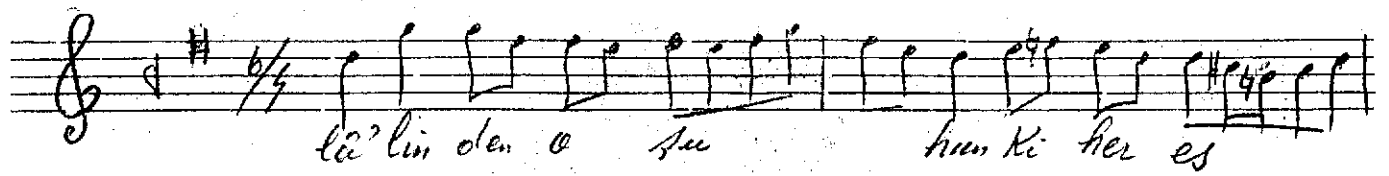


Yegâh Nâkîs yürük sonâi : Eñliktir ağız



2.A.
imzâ sel

Lâ linden o şükürü ki her esrâr sorulmaz
ol şahsınarın rehi mâ'mada şorulmaz
aylıtma görüñ Cüvâsî talî-i ^{dil-i 2251} dîlgâr
amma bu bulanmazcaz ellette durnamaz
Bel belî parimen bel belî mirimen dost dost
dî tana dî tana dere dille dî dî tana
tene dî temen dî dî ten ten ten ten
gel acaun gel a'îmriim